



NOISE AND VIBRATION

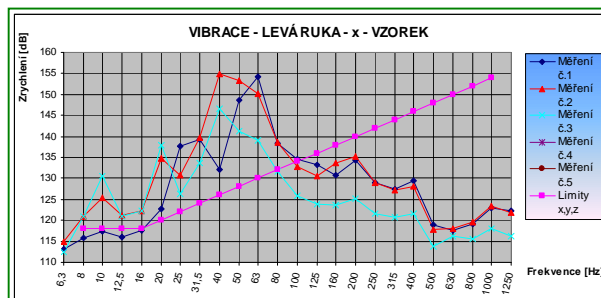
MEASUREMENT OF NOISE AND VIBRATION EMITTED BY THE MACHINERY.

One of duties of manufacturers and distributors is to introduce only the safe products into the Czech and EU market. In accordance with the Directive 2006/42/EC (GP No.176/2008 Coll.) the producer or distributor, among other things, shall inform the user about the level of noise and vibration **emitted by machinery**, in instructions for use.

In this area we offer:

- Measurement of noise emitted by machinery at the workplace;
- Measurement of sound power level of machinery;
- Measurement of audible warning device of machinery;
- Measurement and assessment of audible warning device of machinery;
- Measurement of vibrations emitted by machinery at the workplace.

We measure in accordance with the international EN/ISO standards



NOISE MEASUREMENT OF SPECIAL VEHICLES

Machines operating on roads shall be approved by the Ministry of Transport of the Czech Republic. A duty to meet requirements of the Law No. 56/2001 Coll. in terms of sound limits for the special vehicles is one of documents necessary for approval of roadworthiness for operation on roads.

In this area we offer:

- measurement of noise emitted by a moving vehicle and noise emitted by a standing vehicle,
- measurement of noise of audible warning device of machinery,
- measurement of noise emitted by machinery at the workplace (agricultural and forestry wheeled machines)

(valid for self-propelled machinery and agricultural and forestry wheeled tractors)

HYGIENIC MEASUREMENT OF NOISE AND VIBRATION IN WORKING ENVIRONMENT

We provide service in the sphere of hygienic measurements of noise and vibration in working environment to meet requirements of GP No. 272/2011 Coll., when taking measurement for work categorization according the Law No. 258/2000 Coll.

OTHER SERVICE OFFERED IN THIS AREA:

- Search of source of noise of the machine for new design solution for noise reduction.
- Measurement of vibration emitted by machinery, frequency analysis – basis for design modifications.

